

FAST-75 Traffic Statistics

FAST 75 Covert Traffic Statistics Computer

Covert Data Collection.
Intelligent Traffic Analysis.
Portable Convenience.



Solar Option Shown

Specifications: Fast-75

Speed Accuracy: +/- 1 mph

Speed Range: 2 to 199 mph

K-Band Radar / Beam Width: 12°

Data Capacity: 42.6M Vehicles per GB
(2 GB SD card supplied)

Operating Temp: -22° F to +140° F Power:

12V battery with 110 VAC charger

Autonomy: minimum 7 to 10 days between charging

- 10 Watt Solar option available

Padlocks, hitch pins (1 locking) & 2 pole side brackets included.

Profile: 13.5" x 11.5" x 6"

Weight: 26.4 lbs. with batteries & brackets

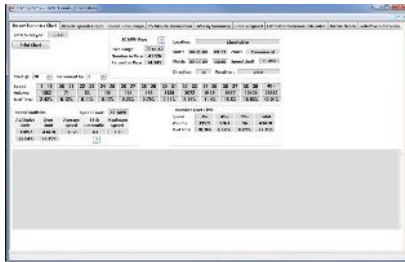
Designed to collect, evaluate and chart traffic data for your speed-related decisions, the Fast-75 Covert Traffic Statistics Computer enables your agency to conduct analysis and targeted enforcement in critical high speed areas when and where needed.

The Fast-75 uses the free flow survey method using sophisticated proprietary algorithms to gather accurate vehicle data. Included Traffic Count software analyzes traffic data to create detailed reports for counts, averages, percentiles, minimums, maximums, date, time and more.

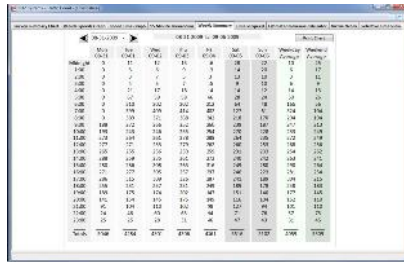
The Fast-75 conveniently mounts on a pole and can be easily moved to a new location.



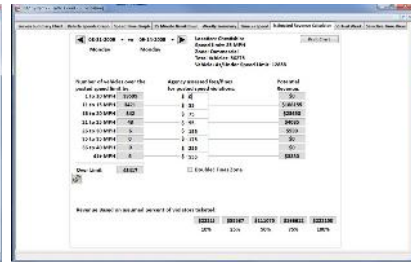
Traffic Count Software



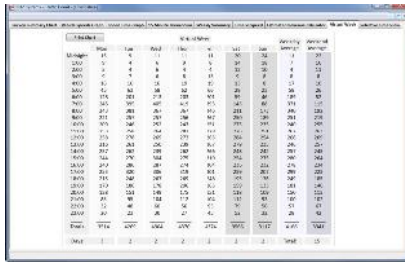
Survey Summary



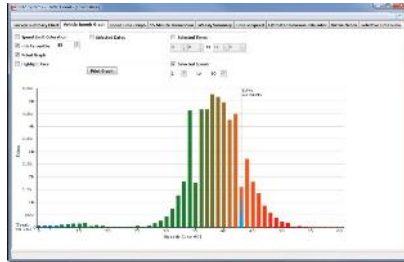
Weekly Summary



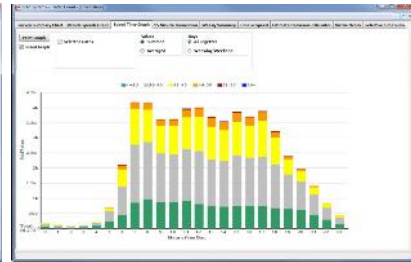
Revenue Calculator



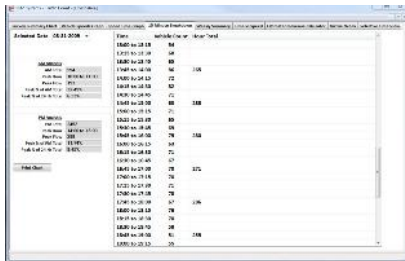
Virtual Week Study



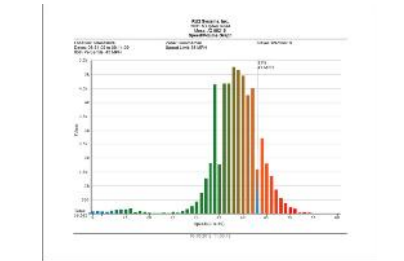
Vehicle Speed Graph



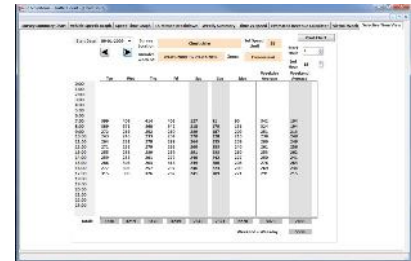
Speed Time Graph



15 Min./Hourly Breakdown



Vehicle Speed Print Out



Select Time View

Familiar Windows tabbed interface makes Survey Set-Up easy:

Opportunity to define Variable Display Scheme (upper/lower limits and increment), Reporting Officer, Start Date/Time, End Date/Time, Conditions, Zone Profile, Location, Direction etc.

Complete Reporting Capabilities

- 1) Survey Summary
 - a. Variable Display Scheme
 - b. Total Surveyed
 - c. Incremental Speed Grid (Speed, Volume, % of Survey)
 - d. Speed Statistics Summary
 - I. Posted Limit
 - II. At/Under Limit Qty. / %
 - III. Over Limit Qty. / %
 - IV. Average Speed
 - V. 85th Percentile
 - VI. Maximum Speed
 - e. 10 MPH Pace
 - I. Pace Range
 - II. Number in Pace
 - III. % in Pace
 - f. Number Exceeding Limit (+10, +20, +30..., Number & %)
- 2) Vehicle Speeds Graph
- 3) Daily Volume/Time Graph
- 4) 85th Percentile Graph
- 5) 15 Minute Breakdown
 - a. AM/PM Analysis
 - I. Total
 - II. Peak Hour
 - III. Peak Flow
 - IV. Peak % of AM
 - V. Peak % to 24 Hr
- 6) Weekly Summary 4 Week Limit
- 7) Time vs. Speed
 - a. Hourly numeric breakdown
- 8) Comparative Survey Analysis
 - a. Virtual Week
 - b. Dynamic/Survey Week
 - c. Comparative Surveys
 - d. Selective Time View (Time Slice)
- 9) Estimated Revenue Calculator
 - a. Client defined fine schedule x Efficiency over Survey Results