



COVERT DATA COLLECTION

RU2 Systems, Inc.

The Leader in Speed Display Technology

Covert Data Collection.

Intelligent Traffic Analysis.

Portable Convenience.

and... NOT MUCH TO LOOK AT!



Solar Option Shown

Specifications: RU2 Fast-75

Speed Accuracy: +/- 1 mph

Speed Range: 2 to 199 mph

K-Band Radar / Beam Width: 12°

Data Capacity: 42.6M Vehicles per GB
(2 GB SD card supplied)

Operating Temp: -22° F to +140° F

Power: 12V battery with 110 VAC charger

Field Autonomy: minimum 7 to 10 days
between charging

- 10 Watt Solar option available

Padlocks, hitch pins (1 locking) & 2 pole side
brackets included.

Profile: 13.5" x 11.5" x 6"

Weight: 26.4 lbs. with batteries & brackets

Designed to collect, evaluate and chart traffic data for your speed-related decisions, the Fast-75 Covert Traffic Statistics Computer enables your agency to conduct analysis and targeted enforcement in critical high speed areas when and where needed.

The Fast-75 uses the free flow survey method using sophisticated proprietary algorithms to gather accurate vehicle data. Included Traffic Count software analyzes traffic data to create detailed reports for counts, averages, percentiles, minimums, maximums, date, time and more.

The Fast-75 conveniently mounts on a pole and can be easily moved to a new location.



RU2 Systems: The Industry Leader in Speed Display Technology

2631 North Ogden Road, Mesa, AZ 85215

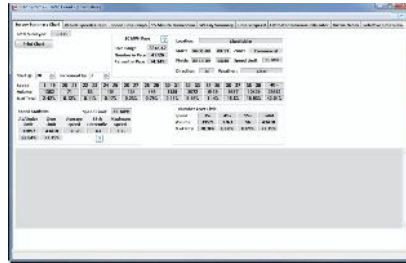
[P] 480-982-2107 [F] 480-982-5237

Toll Free 877-982-2107

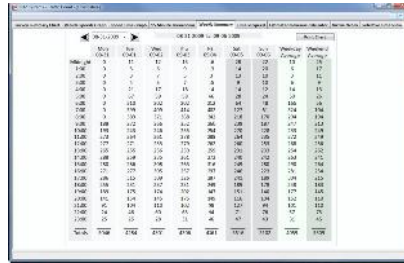
e-mail: info@ru2systems.com www.ru2systems.com



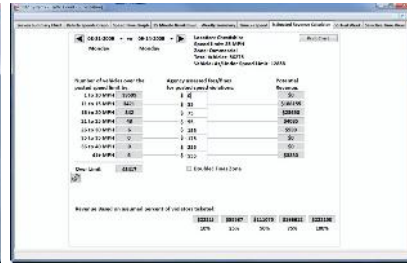
RU2 Traffic Count Software



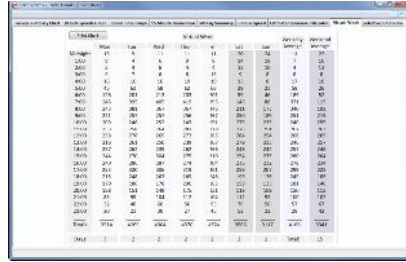
Survey Summary



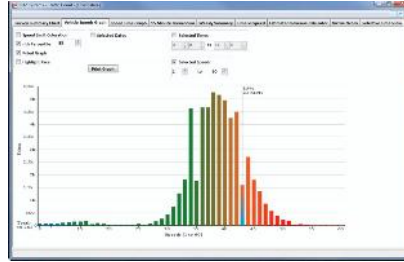
Weekly Summary



Revenue Calculator



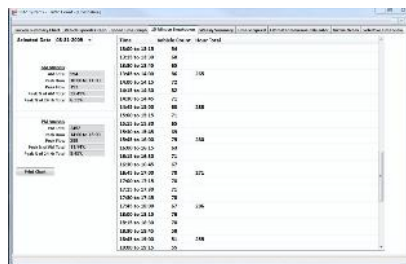
Virtual Week Study



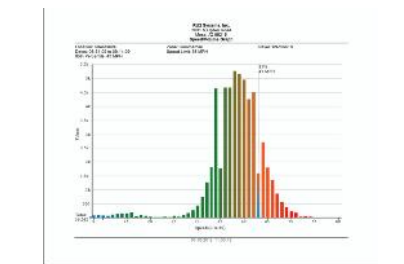
Vehicle Speed Graph



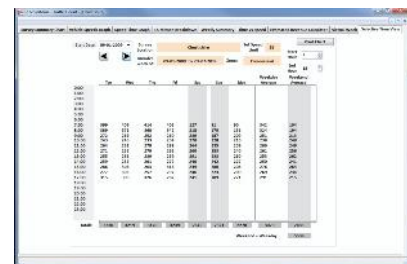
Speed Time Graph



15 Min./Hourly Breakdown



Vehicle Speed Print Out



Select Time View

Familiar Windows tabbed interface makes Survey Set-Up easy:

Opportunity to define Variable Display Scheme (upper/lower limits and increment), Reporting Officer, Start Date/Time, End Date/Time, Conditions, Zone Profile, Location, Direction etc.

Complete Reporting Capabilities

- 1) Survey Summary
 - a. Variable Display Scheme
 - b. Total Surveyed
 - c. Incremental Speed Grid (Speed, Volume, % of Survey)
 - d. Speed Statistics Summary
 - I. Posted Limit
 - II. At/Under Limit Qty. / %
 - III. Over Limit Qty. / %
 - IV. Average Speed
 - V. 85th Percentile
 - VI. Maximum Speed
 - e. 10 MPH Pace
 - I. Pace Range
 - II. Number in Pace
 - III. % in Pace
 - f. Number Exceeding Limit (+10, +20, +30..., Number & %)
- 2) Vehicle Speeds Graph
- 3) Daily Volume/Time Graph
- 4) 85th Percentile Graph
- 5) 15 Minute Breakdown
 - a. AM/PM Analysis
 - I. Total
 - II. Peak Hour
 - III. Peak Flow
 - IV. Peak % of AM
 - V. Peak % to 24 Hr
- 6) Weekly Summary 4 Week Limit
- 7) Time vs. Speed
 - a. Hourly numeric breakdown
- 8) Comparative Survey Analysis
 - a. Virtual Week
 - b. Dynamic/Survey Week
 - c. Comparative Surveys
 - d. Selective Time View (Time Slice)
- 9) Estimated Revenue Calculator
 - a. Client defined fine schedule x Efficiency over Survey Results

Technical specifications are subject to change without notice.

How RU2 Systems Licenses "Traffic Count" Traffic Data Analysis software:

The organization is granted with its first "seat" purchase a site license for our software. RU2 does not restrict the number of computers the software is installed on within the organization. Subsequent "seats" do not cost as much as we are not charging repeatedly for the software. So for example, should an organization want 3 units each with data collection they would be charged for one "First Seat" and two "Additional Seats".

RU2 Systems, Inc.
2631 N. Ogden Road
Mesa, AZ 85215

[P] 480-982-2107 [F] 480-982-5237
Toll Free 877-982-2107
www.ru2systems.com